

Bacterial Shapes: Bacilli

Alcamo (2000). *Fundamentals of Microbiology*, 6th Ed. Fig. 4.1

Bacillus (rod)

Single

Sporeformer

Streptobacillus (chain)

Endospore

Vegetative cell

www.cat.cc.md.us/courses/bio141/labmanual/lab1/stbac.html

Bacterial Shapes: Cocci

diplococcus (pair)

Dr. R. Facklam - CDC

streptococci (chain)

staphylococci

single

1 μm

M2C - GRAN

http://www.univ-roen.fr/M2C/bacteries/infections.html

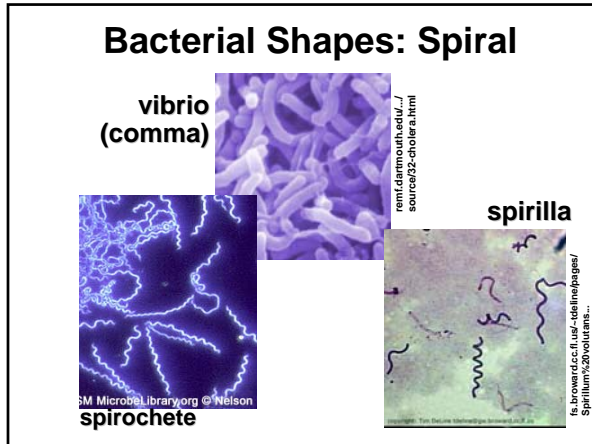
Bacterial Shapes: Cocci

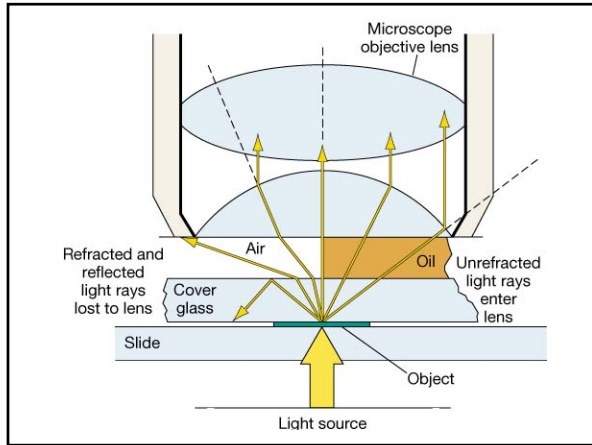
tetrads

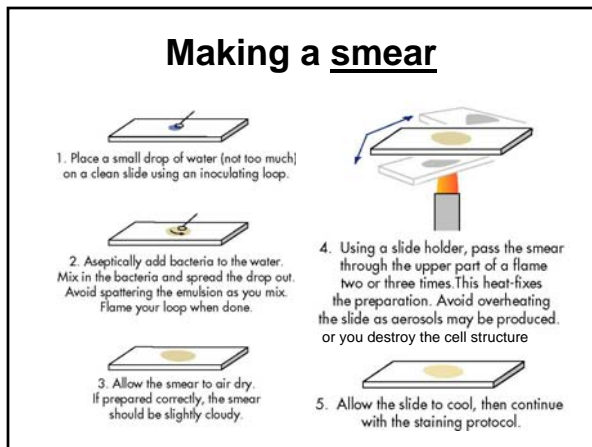
sarcinae (8, cube)

http://www.univ-roen.fr/M2C/bacteries/infections.html

http://www.mikroskopie.de/schlammbakterien.htm



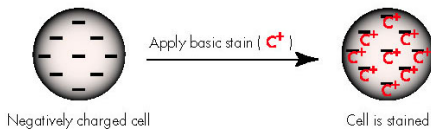




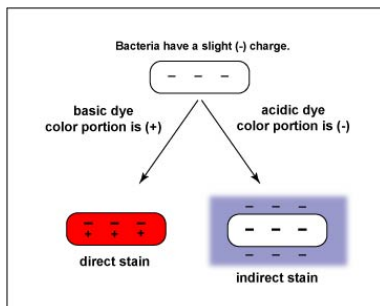
Important note!

- OK to note observations of cell arrangement
- NOT OK to base identification on cell arrangement in intro micro lab


Staining: Simple Stains



Acidic vs. Basic Stains




Basic (+) Stains



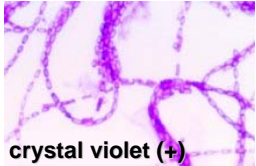
methylene blue (+)

ASM MicrobeLibrary.org©Cellisle



**malachite green & safranin
-both (+)**

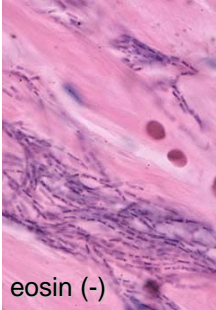
http://textbookofbacteriology.net/BSRP.html



crystal violet (+)

http://www.alken-murray.com/bugphotos.html

Acidic (-) Stains



eosin (-)

http://anthrax.radiopath.org/Pathogen2b.html

