

CARDIOVASCULAR SYSTEM

(c) Circulatory system: transports substances throughout body

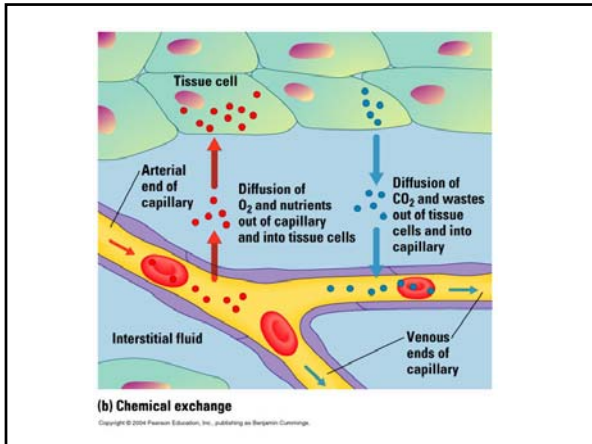
Copyright © 2004 Pearson Education, Inc., publishing as Benjamin Cummings.

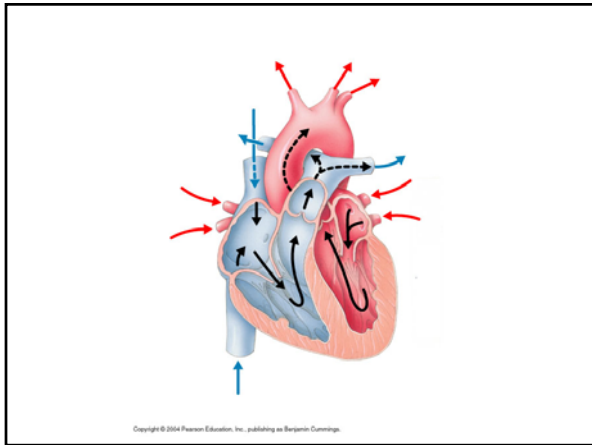
FUNCTIONS

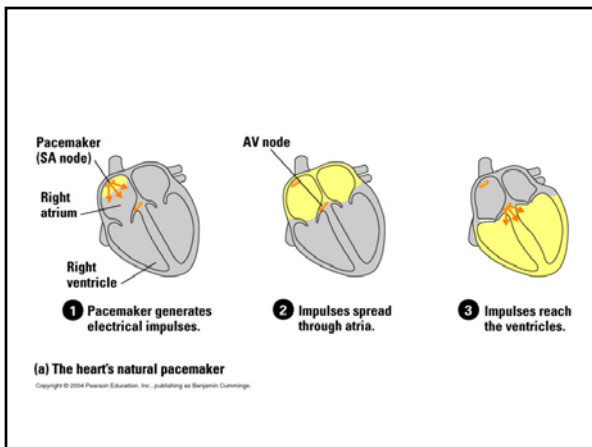
Copyright © 2004 Pearson Education, Inc., publishing as Benjamin Cummings.

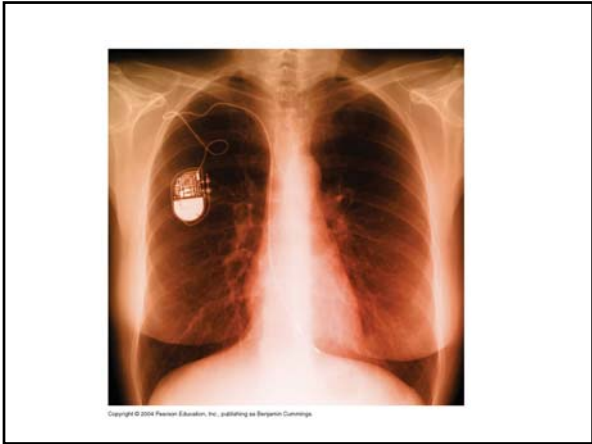
Plasma 55%	Cellular elements 45%
<p>Water (90% of plasma)</p> <p>Proteins</p> <p>Salts (e.g., sodium, potassium, calcium)</p> <p>Substances being transported (e.g., O₂, CO₂, nutrients, wastes, hormones)</p>	<p>Red blood cells (erythrocytes)</p> <p>White blood cells (leukocytes)</p> <p>Platelets (thrombocytes)</p>

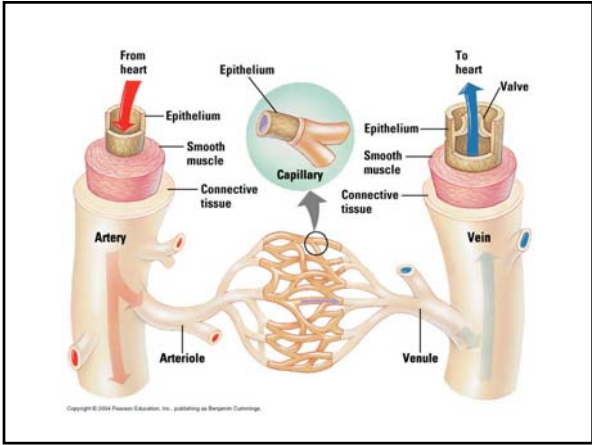
Copyright © 2004 Pearson Education, Inc., publishing as Benjamin Cummings.

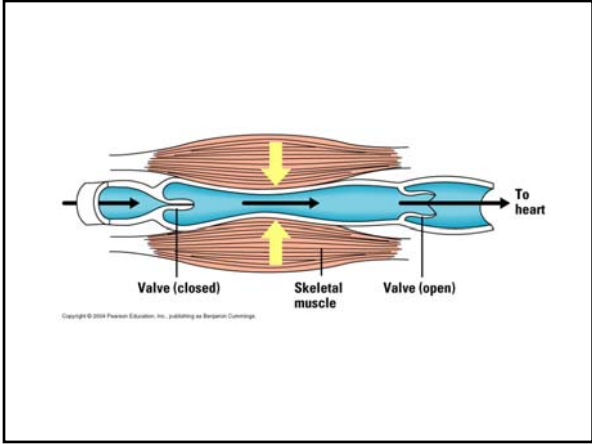




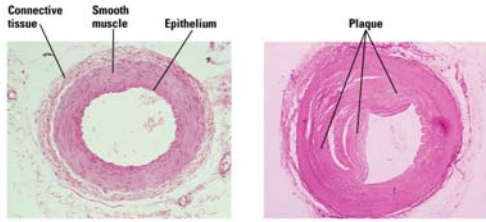






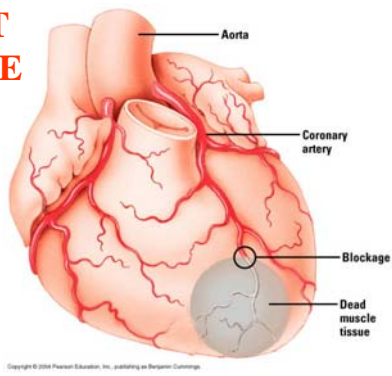


PATHOLOGIES



(a) Normal artery (b) Artery partially blocked by a plaque

HEART DISEASE



MALARIA

NUMBER ONE CAUSE OF DEATH IN THE WORLD

MAL=BAD ARIA=AIR

ASSOCIATED WITH SWAMPS-WHY?

MOSQUITO VECTOR BREEDS IN STANDING WATER

PROTISTS INSIDE RBC'S

