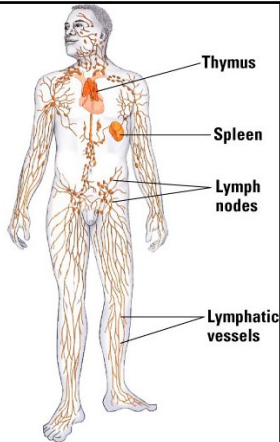
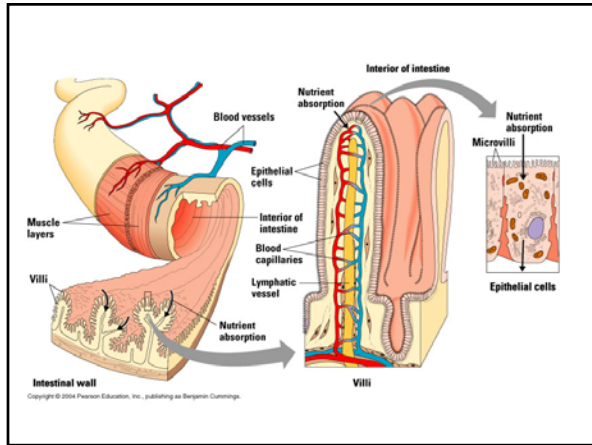


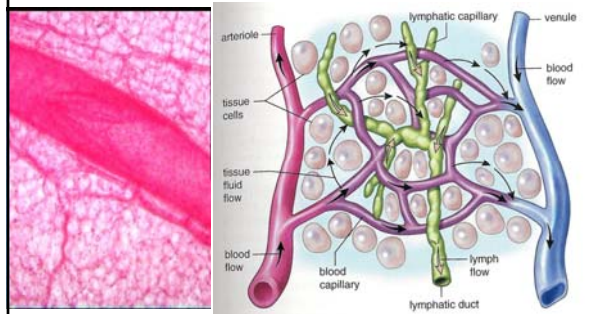
LYMPHATIC SYSTEM

- REMOVES EXCESS FLUID FROM TISSUES
- CARRIES IMMUNE SYSTEM MOLECULES
- DESTROYS PATHOGENS
- ABSORBS FATS



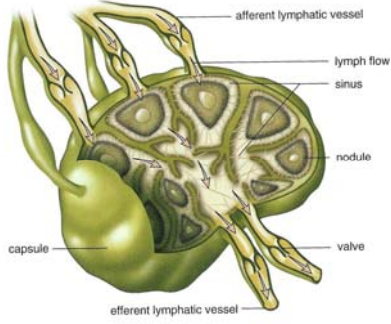


Lymphatic Capillaries



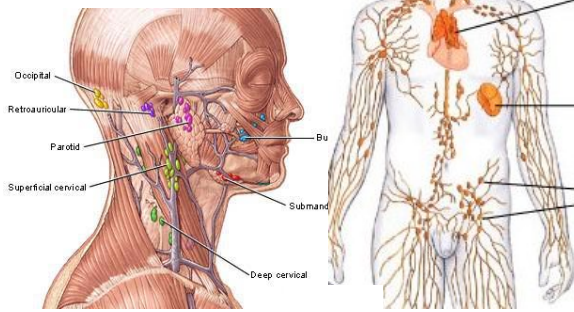
Removes excess water from tissues

Lymph Nodes

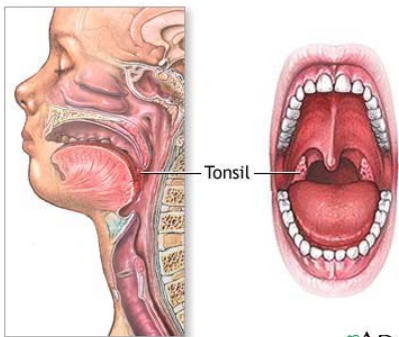


Macrophages inside nodes engulf pathogens

Lymph Nodes

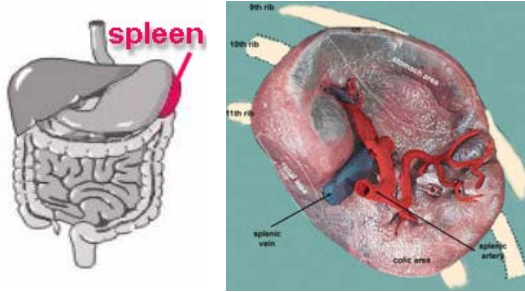


Tonsils



ADAM.
RED BONE MARROW- ORIGIN OF MANY IMMUNE SYSTEM CELLS (WBC'S)

Spleen



SPLEEN- MACROPHAGES ENGULF RED BLOOD CELLS

Splenic Circulation

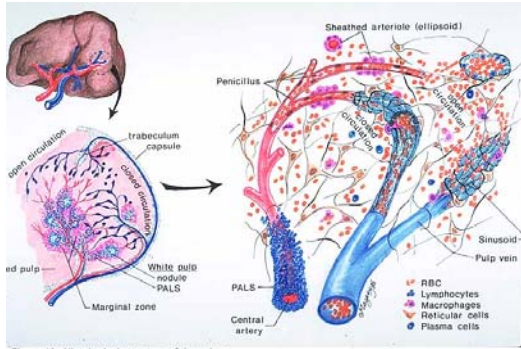
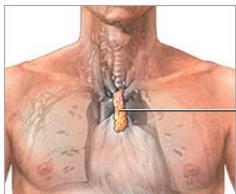
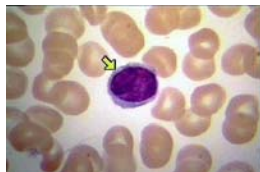


Figure 18. Histological structure of the spleen.

Thymus

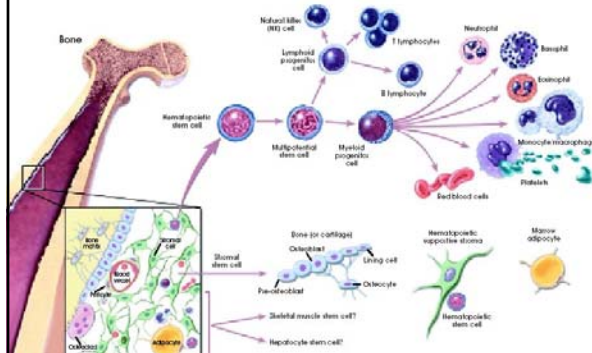


Thymus



**T- LYMPHOCYTES
HORMONES**

Red Bone Marrow



Metastatic Cancer

