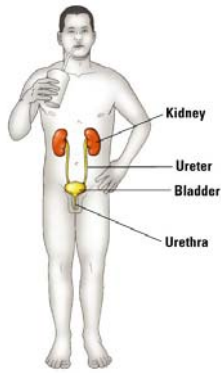


# EXCRETORY SYSTEM



(e) Excretory system: rids body of certain wastes

Copyright © 2004 Pearson Education, Inc., publishing as Benjamin Cummings.

---

---

---

---

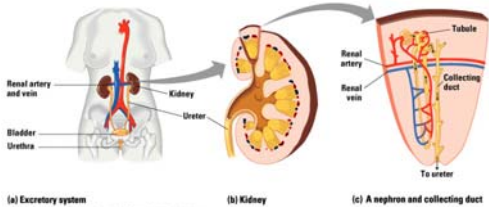
---

---

---

---

# STRUCTURES



(a) Excretory system

(b) Kidney

(c) A nephron and collecting duct

Copyright © 2004 Pearson Education, Inc., publishing as Benjamin Cummings.

---

---

---

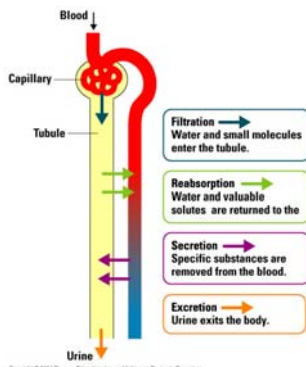
---

---

---

---

---



Copyright © 2004 Pearson Education, Inc., publishing as Benjamin Cummings.

---

---

---

---

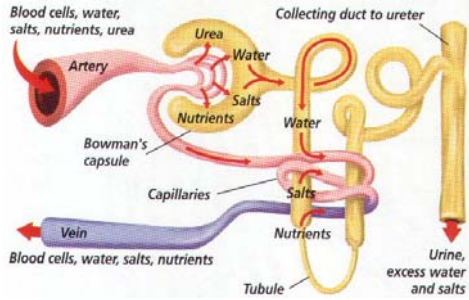
---

---

---

---

## FILTRATION



---

---

---

---

---

---

---

---

## FILTRATE

- WATER
- UREA
- GLUCOSE
- SALTS
- AMINO ACIDS
- VITAMINS

---

---

---

---

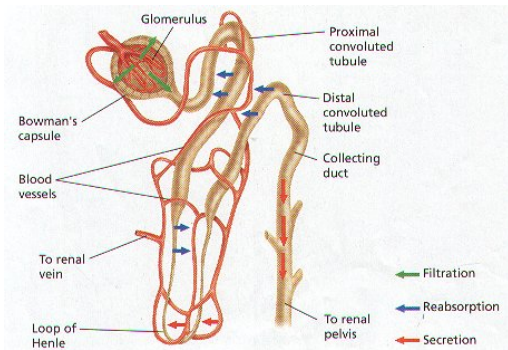
---

---

---

---

## REABSORPTION



---

---

---

---

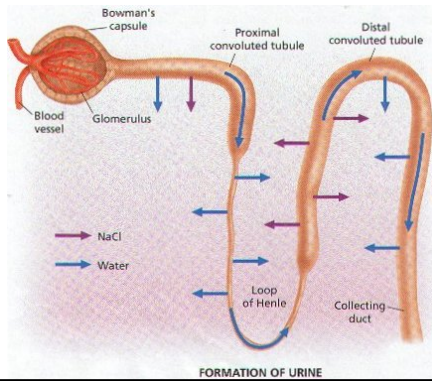
---

---

---

---

## URINE FORMATION



---

---

---

---

---

---

---

---

## URINE COMPOSITION

- WATER
- UREA
- SALTS
- VITAMINS

---

---

---

---

---

---

---

---

## PATHOLOGIES

URINARY TRACT INFECTIONS- USUALLY *E. COLI*

CACULI- KIDNEY STONES

*SCHISTOSOMA HEAMATOBIVM* (PHAROAH'S CURSE)-  
BLADDER FLUKE

---

---

---

---

---

---

---

---

# *Schistosoma haematobium*

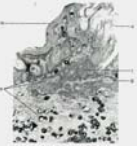
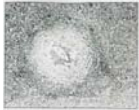
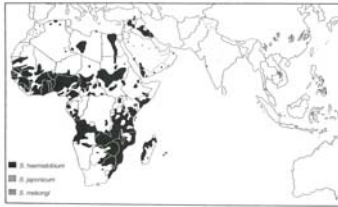


Figure 16.20  
Fig. 16.20 Schistosoma haematobium egg. Note the characteristic  
distended abdomen around the germinal mass.  
© 2012 McGraw-Hill Education

Fig. 16.20 Schistosoma haematobium in the Philippines.  
© 2012 McGraw-Hill Education

---

---

---

---

---

---

---

---