

Skin and Body Membranes

Bio 250
Anatomy Lecture

- ## Skin and Body Membranes
- Function of body membranes
 - Line or cover body surfaces
 - Protect body surfaces
 - Lubricate body surfaces
- Copyright © 2003 Pearson Education, Inc. publishing as Benjamin Cummings *Slide 4.1*

- ## Classification of Body Membranes
- Epithelial membranes
 - Cutaneous membrane
 - Mucous membrane
 - Serous membrane
 - Connective tissue membranes
- Copyright © 2003 Pearson Education, Inc. publishing as Benjamin Cummings *Slide 4.2*

Cutaneous Membrane

- Cutaneous membrane = skin
 - A dry membrane
 - Outermost protective boundary
- Superficial epidermis
 - Keratinized stratified squamous epithelium
- Underlying dermis
 - Mostly dense connective tissue



(a) Cutaneous membrane

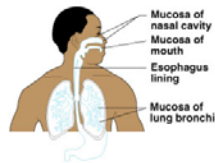
Figure 4.1a

Copyright © 2003 Pearson Education, Inc. publishing as Benjamin Cummings

Slide 4.3

Mucous Membranes

- Surface epithelium
 - Type depends on site
- Underlying loose connective tissue (lamina propria)
- Lines all body cavities that open to the exterior body surface
- Often adapted for absorption or secretion



(b) Mucous membranes

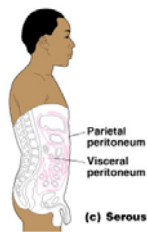
Figure 4.1b

Copyright © 2003 Pearson Education, Inc. publishing as Benjamin Cummings

Slide 4.4

Serous Membranes

- Surface simple squamous epithelium
- Underlying areolar connective tissue
- Lines open body cavities that are closed to the exterior of the body
- Serous layers separated by serous fluid



(c) Serous membranes

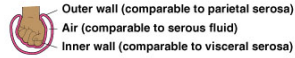
Figure 4.1c

Copyright © 2003 Pearson Education, Inc. publishing as Benjamin Cummings

Slide 4.5

Serous Membranes

- Specific serous membranes
 - Peritoneum
 - Abdominal cavity
 - Pleura
 - Around the lungs
 - Pericardium
 - Around the heart



(d)
Figure 4.1d

Copyright © 2003 Pearson Education, Inc. publishing as Benjamin Cummings

Slide 4.6

Connective Tissue Membrane

- Synovial membrane
 - Connective tissue only
 - Lines fibrous capsules surrounding joints



Figure 4.2

Copyright © 2003 Pearson Education, Inc. publishing as Benjamin Cummings

Slide 4.7

Integumentary System

- Skin (cutaneous membrane)
- Skin derivatives
 - Sweat glands
 - Oil glands
 - Hairs
 - Nails

Copyright © 2003 Pearson Education, Inc. publishing as Benjamin Cummings

Slide 4.8

Skin Functions

- Protects deeper tissues from:
 - Mechanical damage
 - Chemical damage
 - Bacterial damage
 - Thermal damage
 - Ultraviolet radiation
 - Desiccation

Copyright © 2003 Pearson Education, Inc. publishing as Benjamin Cummings

Slide 4.9a

Skin Functions

- Aids in heat regulation
- Aids in excretion of urea and uric acid
- Synthesizes vitamin D

Copyright © 2003 Pearson Education, Inc. publishing as Benjamin Cummings

Slide 4.9b

Skin Structure

- Epidermis – outer layer
 - Stratified squamous epithelium
 - Often keratinized (hardened by keratin)
- Dermis
 - Dense connective tissue

Copyright © 2003 Pearson Education, Inc. publishing as Benjamin Cummings

Slide 4.10a

Skin Structure

- Deep to dermis is the hypodermis
 - Not part of the skin
 - Anchors skin to underlying organs
 - Composed mostly of adipose tissue

Copyright © 2003 Pearson Education, Inc. publishing as Benjamin Cummings

Slide
4.10b

Layer of Epidermis

- Stratum basale
 - Cells undergoing mitosis
 - Lies next to dermis
- Stratum spinosum
- Stratum granulosum

Copyright © 2003 Pearson Education, Inc. publishing as Benjamin Cummings

Slide
4.11a

Layer of Epidermis

- Stratum lucidum
 - Occurs only in thick skin
- Stratum corneum
 - Shingle-like dead cells

Copyright © 2003 Pearson Education, Inc. publishing as Benjamin Cummings

Slide
4.11b

Melanin

- Pigment (melanin) produced by melanocytes
- Color is yellow to brown to black
- Melanocytes are mostly in the stratum basale
- Amount of melanin produced depends upon genetic and exposure to sunlight

Copyright © 2003 Pearson Education, Inc. publishing as Benjamin Cummings

Slide 4.12

Dermis

- Two layers
 - Papillary layer
 - Projections called dermal papillae
 - Pain receptors
 - Capillary loops
 - Reticular layer
 - Blood vessels
 - Glands
 - Nerve receptors

Copyright © 2003 Pearson Education, Inc. publishing as Benjamin Cummings

Slide 4.13a

Skin Structure

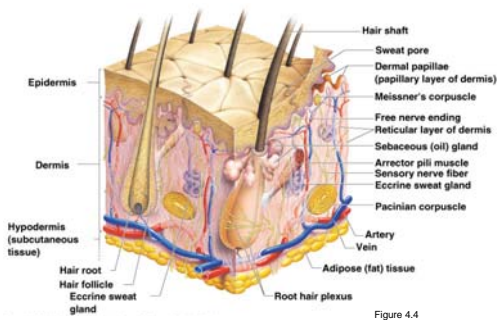


Figure 4.4

Copyright © 2003 Pearson Education, Inc. publishing as Benjamin Cummings

Slide 4.13b

Normal Skin Color Determinants

- Melanin
 - Yellow, brown or black pigments
- Carotene
 - Orange-yellow pigment from some vegetables
- Hemoglobin
 - Red coloring from blood cells in dermis capillaries
 - Oxygen content determines the extent of red coloring

Copyright © 2003 Pearson Education, Inc. publishing as Benjamin Cummings

Slide 4.14

Appendages of the Skin

- Sebaceous glands
 - Produce oil
 - Lubricant for skin
 - Kills bacteria
 - Most with ducts that empty into hair follicles
 - Glands are activated at puberty

Copyright © 2003 Pearson Education, Inc. publishing as Benjamin Cummings

Slide 4.15

Appendages of the Skin

- Sweat glands
 - Widely distributed in skin
 - Two types
 - Eccrine
 - Open via duct to pore on skin surface
 - Apocrine
 - Ducts empty into hair follicles

Copyright © 2003 Pearson Education, Inc. publishing as Benjamin Cummings

Slide 4.16

Sweat and Its Function

- Composition
 - Mostly water
 - Some metabolic waste
 - Fatty acids and proteins (apocrine only)
- Function
 - Helps dissipate excess heat
 - Excretes waste products
 - Acidic nature inhibits bacteria growth
- Odor is from associated bacteria

Copyright © 2003 Pearson Education, Inc. publishing as Benjamin Cummings

Slide 4.17

Appendages of the Skin

- Hair
 - Produced by hair bulb
 - Consists of hard keratinized epithelial cells
 - Melanocytes provide pigment for hair color

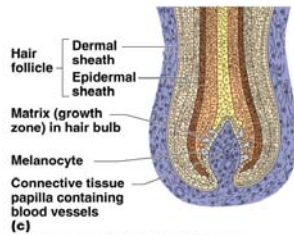


Figure 4.7c

Copyright © 2003 Pearson Education, Inc. publishing as Benjamin Cummings

Slide 4.18

Hair Anatomy

- Central medulla
- Cortex surrounds medulla
- Cuticle on outside of cortex
 - Most heavily keratinized

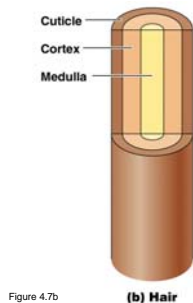


Figure 4.7b

(b) Hair

Copyright © 2003 Pearson Education, Inc. publishing as Benjamin Cummings

Slide 4.19

Associated Hair Structures

- Hair follicle
 - Dermal and epidermal sheath surround hair root
- Arrector pili
 - Smooth muscle
- Sebaceous gland
- Sweat gland

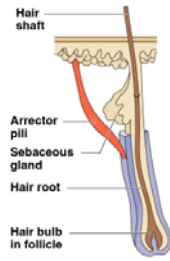


Figure 4.7a

Copyright © 2003 Pearson Education, Inc. publishing as Benjamin Cummings

Slide 4.20

Appendages of the Skin

- Nails
 - Scale-like modifications of the epidermis
 - Heavily keratinized
 - Stratum basale extends beneath the nail bed
 - Responsible for growth
 - Lack of pigment makes them colorless

Copyright © 2003 Pearson Education, Inc. publishing as Benjamin Cummings

Slide 4.21

Nail Structures

- Free edge
- Body
- Root of nail
- Eponychium – proximal nail fold that projects onto the nail body

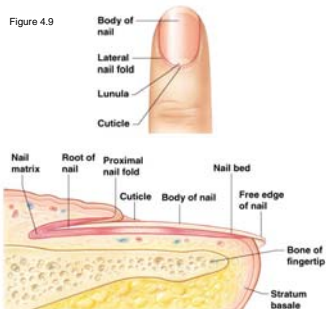


Figure 4.9

Copyright © 2003 Pearson Education, Inc. publishing as Benjamin Cummings

Slide 4.22

Skin Homeostatic Imbalances

- Infections
 - Athletes foot
 - Caused by fungal infection
 - Boils and carbuncles
 - Caused by bacterial infection
 - Cold sores
 - Caused by virus

Copyright © 2003 Pearson Education, Inc. publishing as Benjamin Cummings

Slide 4.23

Skin Homeostatic Imbalances

- Infections and allergies
 - Contact dermatitis
 - Exposures cause allergic reaction
 - Impetigo
 - Caused by bacterial infection
 - Psoriasis
 - Cause is unknown
 - Triggered by trauma, infection, stress

Copyright © 2003 Pearson Education, Inc. publishing as Benjamin Cummings

Slide 4.24

Skin Homeostatic Imbalances

- Burns
 - Tissue damage and cell death caused by heat, electricity, UV radiation, or chemicals
 - Associated dangers
 - Dehydration
 - Electrolyte imbalance
 - Circulatory shock

Copyright © 2003 Pearson Education, Inc. publishing as Benjamin Cummings

Slide 4.25

Rules of Nines

- Way to determine the extent of burns
- Body is divided into 11 areas for quick estimation
 - Each area represents about 9%

Copyright © 2003 Pearson Education, Inc. publishing as Benjamin Cummings

Slide 4.26

Severity of Burns

- First-degree burns
 - Only epidermis is damaged
 - Skin is red and swollen
- Second degree burns
 - Epidermis and upper dermis are damaged
 - Skin is red with blisters
- Third-degree burns
 - Destroys entire skin layer
 - Burn is gray-white or black

Copyright © 2003 Pearson Education, Inc. publishing as Benjamin Cummings

Slide 4.27

Critical Burns

- Burns are considered critical if:
 - Over 25% of body has second degree burns
 - Over 10% of the body has third degree burns
 - There are third degree burns of the face, hands, or feet

Copyright © 2003 Pearson Education, Inc. publishing as Benjamin Cummings

Slide 4.28

Skin Cancer

- Cancer – abnormal cell mass
- Two types
 - Benign
 - Does not spread (encapsulated)
 - Malignant
 - Metastasized (moves) to other parts of the body
 - Skin cancer is the most common type of cancer

Copyright © 2003 Pearson Education, Inc. publishing as Benjamin Cummings

Slide 4.29

Skin Cancer Types

- Basal cell carcinoma
 - Least malignant
 - Most common type
 - Arises from statum basale
- Squamous cell carcinoma
 - Arises from stratum spinosum
 - Metastasizes to lymph nodes
 - Early removal allows a good chance of cure

Copyright © 2003 Pearson Education, Inc. publishing as Benjamin Cummings

Slide 4.30

Skin Cancer Types

- Malignant melanoma
 - Most deadly of skin cancers
 - Cancer of melanocytes
 - Metastasizes rapidly to lymph and blood vessels
 - Detection uses ABCD rule

Copyright © 2003 Pearson Education, Inc. publishing as Benjamin Cummings

Slide 4.31

ABCD Rule

- A = Asymmetry
 - Two sides of pigmented mole do not match
- B = Border irregularity
 - Borders of mole are not smooth
- C = Color
 - Different colors in pigmented area
- D = Diameter
 - Spot is larger than 6 mm in diameter

Copyright © 2003 Pearson Education, Inc. publishing as Benjamin Cummings

Slide 4.32
